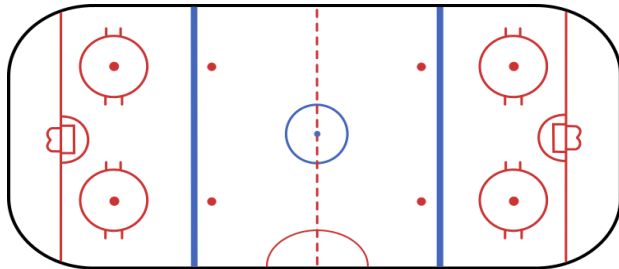


**WINTERSPORT Ice Arena:**

Hockey is a great game that can provide players with life skills and confidence. Wintersport provides a safe and friendly environment for players of all ages to develop skills in a structured setting. We will maintain a positive atmosphere to bring out the potential of each player. We are not asking for your player to be the best player out there, but the best that he or she can be. Our professional staff works with each and every child to ensure that he or she have a great time while developing their basic hockey skills. For more info contact Vince Prozzillo direct at [vince@bucksice.com](mailto:vince@bucksice.com)



**Steps to be a Great Hockey Player**

**Hockey#1 Learn to Hockey Skate**

**Beginner**

**Hockey#2 Learn to Play Hockey**

**Novice**

**Hockey#3 Skills & Drills**

**Intermediate/Advanced**

“LIKE” us on Facebook @ [www.facebook.com/bcicesports](http://www.facebook.com/bcicesports)

551 York Road  
Willow Grove, PA 19090



**LEARN TO  
HOCKEY SKATE**  
Hockey #1

**WINTERSPORT**  
551 York Road  
Willow Grove, PA 19090  
215-659-4253  
[www.wintersportice.com](http://www.wintersportice.com)  
[www.bucksice.com](http://www.bucksice.com)  
[www.facebook.com/bcicesports](http://www.facebook.com/bcicesports)



**Learn to  
Hockey Skate  
Hockey #1**

*Learn to Hockey Skate is a 40 minute class to teach the basics of hockey skating. Players will get 10 minutes of free skate at the end of each class. Players are required to have full equipment including -full cage helmet, shoulder pads, elbow pads, knee and shinguards, hockey gloves, hockey pants, stick, and skates. Rental skates are included at no charge.*

*Hockey Skating will focus on:*

- *Posture*
- *Starts & Stops*
- *Crossovers*
- *Edge Control*

**Location:**  
**Wintersport**  
**551 York Road**  
**Willow Grove, PA 19090**  
**Phone: 215-659-4253**

**Cost**  
**7-Week Program \$145**  
**Register a week prior \$135**  
**Or**  
**\$25 / Session Drop-in**

**Dates and Times**  
**Saturdays**  
**11:10 AM - 12:00 PM**  
**Session #1: Oct 29th-Dec 10th**  
**Session#2: Jan 7th-Feb 18th**  
**Session#3:Feb 25th-April 8th**

**Instructor:**  
**Coach Vince Prozzillo**  
Vince has developed and supervised programs from basic to advanced players. All players involved in these programs benefitted from Vince's experience and knowledge of the game. Vince is an Advanced Level 4 USA Hockey Coach.

**Hockey #1 Sign-up**

Name: \_\_\_\_\_

Address: \_\_\_\_\_

Birth Date: \_\_\_\_\_

Phone: \_\_\_\_\_

Email: \_\_\_\_\_

Parent/ \_\_\_\_\_

Session #1\_\_#2\_\_#3\_\_

Method of Payment:  
 Cash     Check     Credit Card

Make Checks payable to: Bucks Ice

The skater and parent/guardian assume all risks and hazards incidental to this program and activities sponsored. Therefore and hereby release Bucks County Ice LLC, its officers, directors, employees, and instructors from any liability on account of injury to a skater however incurred. The parent/guardian hereby gives permission /consent to emergency medical treatment for injuries/illness. A copy of this consent will be as valid as the original.

Signature: \_\_\_\_\_ Date: \_\_\_\_\_